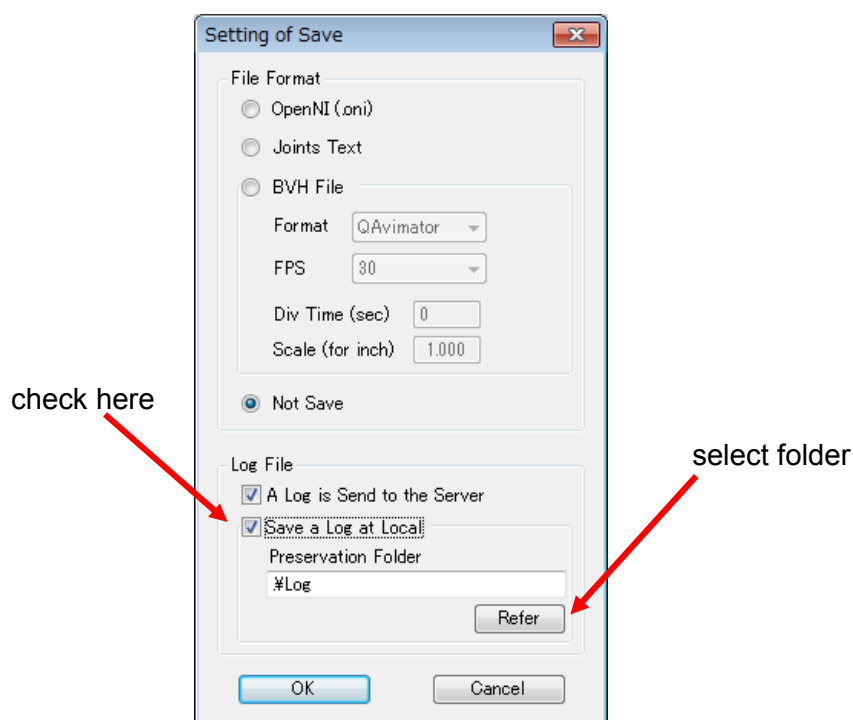


## Log Function of Rinions

1. When you want a local log.

- 1) Open "**Setting of Save**" dialog. (Setting Menu -> Save)
- 2) Check "**Save a Log at Local**" Check Box.
- 3) Click "**Refer**" Button to select save folder.



4) Open the Sensor Window, click the yellow play button and red Record button.

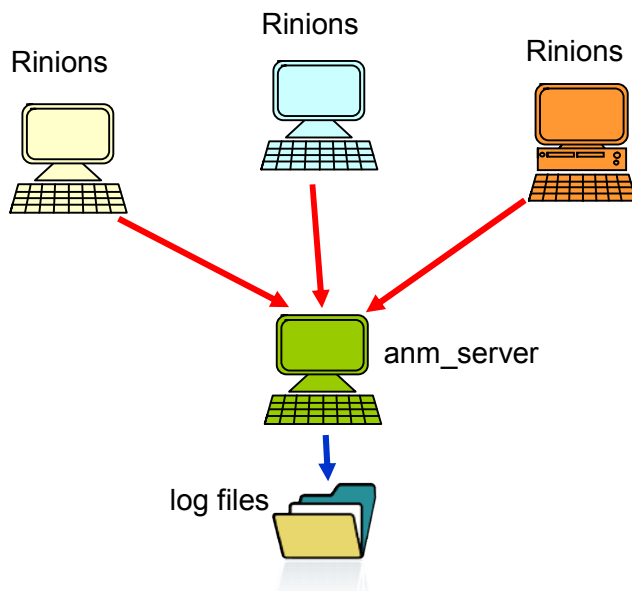
5) You will get log file in "**specified folder**\Rinions\_User" folder.

Attention: "**Rinions\_User**" can be changed at "**User Name**" Text Box in "**Setting of Network**" dialog.

6) For example, file name is **2013.02.11\_12.13.14.txt**. Here 2013 is year, 02 is month, 11 is day, 12 is hour, 13 is minut and 14 is second.

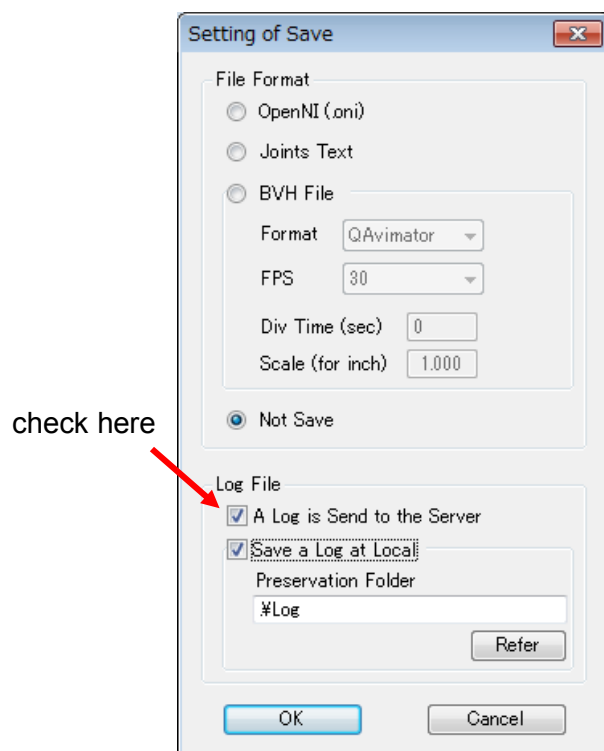
## 2. When you want remote logs.

You can get log files from remote Rinionss

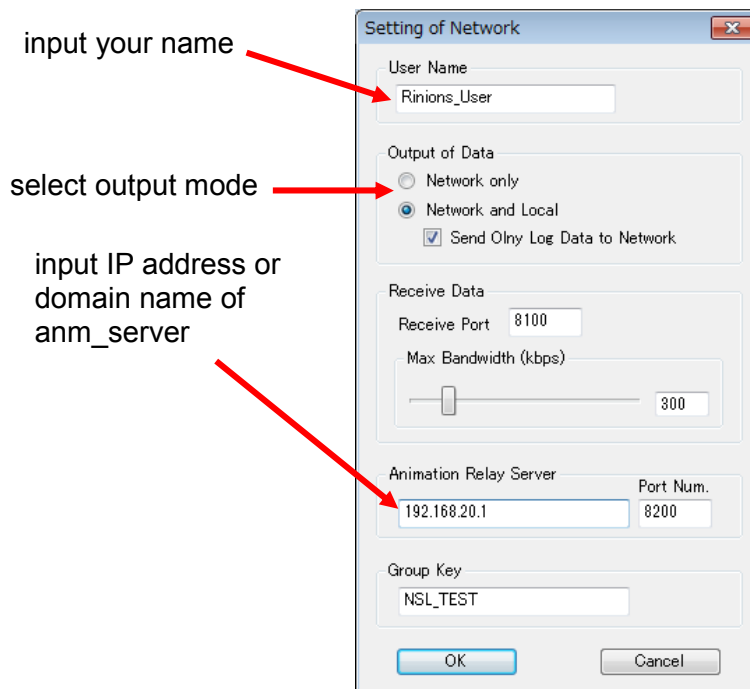


### 2-1. Rinions

- 1) Open "**Setting of Save**" dialog. (Setting Menu -> Save)
- 2) Check "**A Log is send to the Server** " Check Box.



- 3) Open "**Setting of Network**" dialog. (Setting Menu -> Network)
- 4) Input your name in "**User Name**" Text Box.
- 5) Select output mode. If you do not want to send Animation Data to another Rinions, I recommend to select "**Network and Local**" Radio Button and check "**Send Only Log Data to Network**" Check Box.
- 6) Input IP address or domain name of **anm\_server** in "**Animation Relay Server**" Text Box.
- 7) To login the anm\_server, select "**Login**" from **File** menu.
- 8) Open the Sensor Window, click the yellow play button and red Record button.



## 2-2. anm\_server

- 1) If your computer is in Firewall, please open **8200 UDP** port on Firewall.
- 2) Double click **anm\_server.exe**
- 3) You will get log files at ".\datalog\Group Key\User Name\" folder.
- 4) File name's format is same as local log.

## 3. Data Structure

Data structure of log file is Joint Text File Format + Joint Angle (degree unit). About Joint Angle, please see below fig.

